
THE ISLINGTON SOCIETY

NEWS

**JUNE
1998**

THE DUMB-BELL PROBLEM

The junctions at Highbury Corner and Archway are joined by Holloway Road and dominated by traffic; each has four major roads converging on a giratory; each has a London Underground station and, at Highbury, Railtrack shares the station; finally, each displays a very poor standard of architecture and civic quality.

In the case of Archway, it is close, but not comfortably close, to Whittington Hospital. It incorporates an island, Archway Close, containing miscellaneous buildings which include Archway Tavern and the Methodist Central Hall. An island surrounded by a traffic system which joins the A1 and A400.

Finally, both Highbury and Archway have shops which are substantial and serve an extensive residential area in the case of the latter. Added to all this the air is filled with vehicle exhaust pollution exceeding a standard set by the European Union.

All told this is an unacceptable environment for everyone, making movement unpleasant, difficult and dangerous. The draft planning brief prepared by the Council's Planning Department puts it clearly in the following words "This complex of offices and shops had proved to be an architectural failure with nondescript buildings with their multi level entrances

linked by confusing and illogical spaces. The complex does not relate well to the main shopping streets." It is clear that something has to be done.

In the case of Highbury Corner, the key issue is to provide an efficient and attractive entrance to the station, at present blocked by a Post Office on a temporary permit, linked to a decent ticket concourses shared, as now, between London Underground and Railtrack.

However, nothing can be done without the collaboration of Railtrack, the freeholder. Archway is an even greater problem because there are four major freeholders.

In these two cases investment is the major card in the game of redevelopment; without it we can expect little but patching when the problem calls out for something radical enough to raise the spirits of everyone in Islington. Highbury Corner and Archway are the warts on the end of

the dumb-bell.

One of the freeholders at Archway has indicated an interest in redeveloping Archway Mall between Highgate Hill and Vorley Road to the west of the site. This is an encouraging start but the Archway site still needs to be looked at as a whole with all the problems which beset it, not piecemeal.

Hence the importance of the Council's central role in setting out a comprehensive brief for the whole area, not just parts of it. It is good news that the Development Control Subcommittee, on 5th March, approved for public consultation a draft brief from the Council's officers. The Islington Society is now watching developments closely and will be submitting comments on the draft. This is an opportunity the Society has been waiting for and this time we must succeed in getting a workable layout and a good set of buildings to enhance these two important parts of Islington.

PUBLICATIONS' EDITOR

Kemner Beecroft
24 Islington Park Street,
London N1 1PX
Telephone 0171-226 7429

CONTRIBUTORS to this issue include Jane Abbott, Alison Carmichael, David Gibson, Roger Mears, Harley Sherlock and Gordon Wigglesworth.

OFFICERS OF THE
ISLINGTON SOCIETY

Chairman - Harley Sherlock,
13 Alwyne Place, London N1 2NL
Telephone 0171-226 3404

Secretary - Sondra Beecroft,
24 Islington Park Street,
London N1 1PX
Telephone 0171-226 7429

Treasurer - Adam Bower,
12 Cloudsley Square, London N1 0HT
Telephone 0171-278 7663

Recruitment - David Holland,
61 Theberton Street, London N1 0QY
Telephone 0171-226 7170

Membership - Jim Lagden,
c/o Islington Museum Gallery, 268 Upper
Street, London N1 2UQ
Telephone 0171-354 9442

Chairman of Planning, Conservation and
Transport Committee - Gordon Wigglesworth,
53 Canonbury Park South, London N1 2JL
Telephone 0171-226 7734

Representative on the Conservation Advisory
Committee - Roger Mears,
2 Compton Terrace, London N1 2UN
Telephone 0171-359 8222

Printed on recycled paper by Rapide -
Telephone 0171-609 4485

Comment

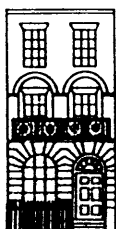
At the AGM our speaker, Tony Allcock, made an impassioned plea for us to recognise Arsenal Football Club as an important part of our heritage (page 9). With an opposing view, Alison Carmichael forcefully makes the case of the Highbury Community Association (page 8). This makes us face up to a typical campaigning dilemma. I would hate to see the League Champions and F.A. Cup holders leave Islington but the compulsory purchase of homes to provide an all seater stadium is not compatible with a democratic society. With fewer people attending sold out matches than forty years ago, it should not be beyond our ingenuity to continue to keep football grounds compatible with residential areas. Unfortunately, too many supporters still behave badly and too many arrive by car. But even if the many ideas for overcoming these problems were implemented, they would be ineffective so long as Premier League fixtures are arranged to suit television companies rather than football supporters and local residents.

If Arsenal management was as skilled at community relations as its players are at playing football, the problems might not seem so intractable.

Members will remember that last year the Anderson's Yard Campaign Group joined forces with us. Now we have been joined by the Angel Improvement Trust and, on 1st July, we will be joined by the Friends of Islington Libraries (FOIL) (page 10). Let me extend a warm welcome to everyone, coupled with the hope that, together, our effectiveness exceeds the sum of our already effective parts.

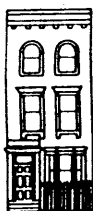
So soon after the election of a hung council is not the time to make a serious assessment of the likely effects but the loss of Andrew Bosi as a councillor cannot be allowed to pass without comment. As Chair of the Environment Committee, and an active member of both the Development Control and Transport Sub-Committees, he has been a constant influence for good. His strong views and eccentric humour will be sadly missed. By way of compensation, two champions of the environment, Jenny Sands (Labour) and Richard Heseltine (Liberal Democrat), will be returning to the Council Chamber after four years. Those who want to commiserate with Andrew will have an opportunity on 26th June when he, once again, conducts the Society's Bill Manley Memorial Pub Crawl (page 4).

Harley Sherlock
Chairman



69 Amwell Street
GEORGE CRUIKSHANK
the illustrator
lived here

136 Englefield Road
GEORGE LEYBURN
the music hall artiste
lived here



**The Dairy, Crouch Hill Wins Gribble Award
6pm, Wednesday 17th June**

After as close a contest as could be, the 1998 Geoffrey Gribble Award for a recently completed building project judged to have made a significant contribution to improving the environment of Islington and which fits well into its surroundings was given to The Dairy, Crouch Hill, N4. This Regent Inns' pub, in a listed building that used to be Friern Manor Dairy, is on the corner of Crouch Hill and Hanley Road.

The bronze memorial plaque, sponsored by Ruth Gribble, will be fixed to the winning building and the presentation of the awards will be made at The Dairy at 6pm on Wednesday 17th June.

On Thursday 7th May, the day of the local elections, the Geoffrey Gribble Award panel met in the afternoon to tour the nominated buildings and argue the merits of each to decide upon a winner. Twelve building schemes had been nominated but three were ruled out for this year as they were not finished and a late nomination, which the judges agreed to consider, meant ten buildings to visit.

By dusk, the tour was finished and it was clear that the Geoffrey Gribble Award decision was not going to be straightforward. Half a dozen of the schemes were very good indeed, with two front runners.

Both the favoured buildings fulfilled the terms of the award with distinction. Geoffrey Gribble had been the Borough's Conservation Officer for many years at a time when conservation was not such a popular band wagon as it is now. Geoffrey's vision had been to establish the present pattern of conservation areas and to recognise the value of good design in enhancing the historic qualities that are so abundant in Islington. The award was created

in 1990 in honour of his memory.

A scoring system, tallying the votes by each of the judges, is used to rank the nominations as a guide for the discussion leading to the award. The scores turned out to be strangely prophetic of the counting going on elsewhere of the votes cast in the council elections; the two main contenders emerged equal. No casting vote here, though. The judges discussed at length the merits of each of the schemes and, finally, The Dairy was chosen as the winner by consensus.

The Dairy is best known for its incised coloured cement render mural panels illustrating the dairy trade "then" and "now", the "now" being 1889, and its fine red brickwork on the Crouch Hill frontage. It closed as a dairy before the last war and had been slowly decaying, with a succession of temporary tenants, mainly in the car trade, since then. The Council, the Neighbourhood Forum, Islington Building Preservation Trust, English Heritage and many others had been active in promoting a more beneficial use for

this landmark building. The pub, by Regent Inns, not only preserves the history of Islington but brings alive a dead building; the place was crowded when the judges were there on a Thursday evening. It makes a great contribution to north east Islington.

Highly commended, second by a narrow margin, was the redevelopment of the Ice Wharf building on the Regent's Canal at Battlebridge Basin. This apartment building alongside the canal, with its dramatic curved end, makes a grand entrance to the basin and complements the restored wharf buildings nearby. The only disappointment is the damage done as part of the work to the original canal abutment wall which has not been faithfully reinstated.

Roger Mears' new ground floor brick fronts to three of the group of Grade I listed terrace houses on Newington Green, the oldest surviving brick built terrace in London, dating from 1658, was commended too.

The Dairy deservedly joins a distinguished list of past winners.

The Bill Manley Memorial Pub Crawl 6.30pm, Friday 26th June

This event is rapidly becoming an Islington tradition. It celebrates the life of local historian Bill Manley in the very pubs that he frequented for drinking, eating, talking and writing: well remembered by many landlords for his infuriating habit of spreading research documents over every available table!

It is also a tradition that the occasion is led by Andrew Bosi, second only to Bill Manley in his knowledge of real ale, and that it is held in Clerkenwell where the distance between pubs is shortest. So, be outside the Clock Tavern on Islington Green at 6.30pm on Friday 26th June.

Bill's lavishly illustrated history of music hall, "Islington Entertained", is available through Islington libraries.

1998 Sam Morris Civic Pride Shopfront Award

The Sam Morris Civic Pride Shopfront Awards were instituted over ten years ago to encourage and recognise a sense of pride in those who were keepers of commercial premises within an area of about a kilometre of the Angel. The judges look at the ground and first floor levels of nominated premises and the sense of position in the street that they convey.

Although it is called a shopfront award, it covers all types of commercial premises. The first winner was the then newly opened Minogues Bar in Liverpool Road and a subsequent winner was the Midland Bank for its premises in Islington High Street. Later it was won by Charlie Allen, the tailor in Upper Street, and last year the Award went to Calzone on the Upper Street high pavement.

The winning premises are awarded a trophy which they retain for a year. The winner and the two runners-up are given, to keep, a framed drawing of their premises made by students

of the College of Allied and Distributive Trades which trains people in shop fitting and graphic design.

Nomination are now invited for premises to be considered for the 1998 Award. The area of the competition has been expanded so that any commercial premises within the Borough of Islington are now eligible. It is intended to announce the winners in the October edition of *I.S.NEWS* and nominations should be submitted by 31st July to:

Peter Brades
12 Charlton Place
London N1 8AJ

Have a good look round because anybody who thinks that premises should be considered for the Award is welcome to nominate them.

New Committee members

Gordon Wigglesworth has joined the Executive Committee. He is chairman of the reconstructed Planning, Conservation and Transport (PCT) Committee. He is an architect with a

distinguished public service career that culminated with his post as Chief Housing Architect at the GLC. After the abolition of the GLC combined private practice in Docklands with advising third world governments on their housing policies.

Peter Powell, a new PCT Committee member and an Islington councillor in the 1980s, was chair of the then Planning Applications Sub-Committee. He distinguished himself as chair of the Council's Brighter Islington Campaign, famous for its cleaning up operations, its tree planting and its archaic Information Caravan.

Norman Beddington, also a new PCT Committee member and Islington Councillor during the 1980s, was an active member of the then Development and Planning Committee. He chairs the Clerkenwell Community Trust which published the recent survey on traffic pollution and played a prominent part in the successful campaign against the proposed superstore at Lough Road.

**Visit to the Stationers' Hall
2pm, Tuesday 4th August**

The Stationers' Company's archivist, Robin Myers, has kindly invited a small group to visit Stationers' Hall for a tour of the building and a talk about the early days of the Company. The visit, by tickets obtained in advance, will be on Tuesday, 4th August, when the hall will be closed for refurbishment. It will begin at 2pm and last about two hours. The Stationers' Hall is in Ave Maria Lane, near St Paul's Cathedral.

Places are strictly limited and will be allocated to the earliest applicants. Anyone wishing to attend should write to Visit, The Islington Society, c/o Islington Museum Gallery, 268 Upper Street, N1 2UQ, enclosing a stamped, self addressed envelope as soon as possible and in any case before 22nd June.

Great Traffic Jams of the World

Michael Palin filled Islington Town Hall's Council Chamber to overflowing for the Society's 7th James Ogilvy-Webb Memorial Lecture, on Great Traffic Jams of the World, on Wednesday, 4th March.

He told his audience that "cars do not make us lazy, they allow us to drive to the gym to walk three miles on the tread-mill. Cars are not bad things, they are good things. They allow us to go to the hospital quickly to see someone we love who has just been run over by a car."

The audience was well rewarded by a witty and stylish talk carefully constructed and full of practical good sense. There was none of the adversarial approach that can enter into and bog down discussion of traffic problems. Palin has his Mercedes 190 and intends to keep it and use it. But he has his bicycle and uses that too. Above all he believes we should get on our feet and walk places, a possibility which has many benefits but often receives scant attention in trans-

port discussions.

In less than a lifetime, air transport has advanced from the Wright Brothers and Bleriot to Concorde. Over the same time, the speed of land transport has been ridiculously unchanged and so has its main source of motivation, the internal combustion engine.

There can be no reason why technological advances cannot be made in the development of transport on the ground as it has in the air. Resources should be forced into development of alternative and less polluting forms of power and more environmentally friendly vehicles.

People have used technology to live closer together. The amazing development of Mexico City, Bombay and Jakarta, even of Greater Los Angeles, London and Paris has happened because people have thought that if you wanted to make money, you moved to a city. This cannot be reversed.

People demand the freedom of movement and they see the motor car as giving it

to them. Road rage, pollution and delay are often seen as an acceptable price to pay for this freedom. Pedestrians are sane but motorists are sane people who suffer an insane personality change when they get behind the wheel.

Would Michael Palin be prepared to give up his car? No. Would he be prepared to use it less and public transport more? Would he be prepared to accept a lower speed limit in urban areas? Yes he would and surveys show that most people would if better and more affordable public transport were available.

A report has just been published showing that the real cost of running a car has fallen and that of public transport has risen which is absurd. Buses are among the worst polluters, the tube system is starved of investment and neither of these situations should be allowed to continue.

Palin concluded by saying that traffic jams will always be with us but the car culture must give way to a transport culture.

**Historic Film of Islington
7.30pm, Wednesday 30th September**

Film archivist and transport historian, John Huntley, of the London Film Archive Trust, will show film and talk about early street scenes, the story of Collins Music Hall and the Regent's Canal (Islington Tunnel) in 1924 and 1976. He will show film clips from feature films such as "The Arsenal Stadium Mystery" from 1939 and scenes from early Hitchcock films together with a slide presentation of Islington in the early 19th century.

This fascinating presentation will be at Islington Town Hall, Upper Street on Wednesday 30th September at 7.30pm. The London Film Archive Trust collects film, particularly amateur film, of our heritage and history that could otherwise be lost forever.

Islington Building Preservation Trust

Last October's edition of *I.S.NEWS* told of the fifth anniversary of the Islington Building Preservation Trust and how it approaches its tasks of providing independent technical advice, acting as an enabler and, sometimes, negotiating to unravel problems relating to buildings at risk. A couple of examples were given of completed cases. Here are some more.

More completed cases

Members of the Trust were instrumental in resolving inter departmental problems and negotiating between the Council and the occupant of Lloyd's Diary in Amwell Street. This well known building has now been repaired and refurbished.

Expert advice from members of IBPT helped the residents' campaign to rebuild the industrial chimney at 64 Matilda Street, a local landmark demolished under a dangerous structure notice. The appeal inspector's report emphasised the importance of local listing.

Prompt work by members of the Trust stopped unneces-

sary, excessive demolition of parts of 2-4 Leigh Road which is a villa pair of houses in a prominent position on Highbury Hill. On the basis of technical advice from the IBPT, the buildings were repaired instead.

A detailed survey of the feasibility of repairing the dilapidated railings and gates and the vandalised tombs at St Luke's Churchyard, Old Street, was carried out by IBPT in 1993 and the council provided an estimate for restoring the landscape. This was used by the Council as the basis for a successful campaign to raise funds to reinstate the churchyard. The Trust acted as the Council's agent for the repairs which included putting lanterns back on the railings and reinstating the traditional pattern of street lighting. English Heritage carried out a paint analysis and the restored railings have been repainted in the original "stone" colour. This much needed open space was opened to the public again in November 1996. The Islington Society's Geoffrey Gribble Award for

1997 was presented to this project on Wednesday 11th June 1997.

Current challenges

Building on the success of the work to the Churchyard at Old Street, the IBPT is working with the Council to repair and improve historic railings elsewhere in the Borough. Thornhill Square has been surveyed and an estimate made of the cost of restoring the listed railings with new gates. Assistance is being given to the Canonbury Society for improving the enclosure of the New River Walk where new railings enclosing the pump chamber at the south end are being erected under the Trust's direction.

Caledonian Park's magnificent railings remain sadly neglected, although the exemplary repair of a sample gate and two panels of railings carried out by the Trust in 1994, shows what could be achieved. A scheme for repairing and extending the railings around the park is being developed. These projects will inevitably need Lottery funding.

Progress at Sadler's Wells

When Lilian Baylis founded Sadler's Wells Theatre in 1931, one of her key aims was that the theatre should be a resource for the local community. A splendid example of her philosophy in action is SWING (Sadler's Wells Islington Group), a local group that was set up in 1996 to increase awareness of and mobilise support for the new Sadler's Wells among Islington's residents and businesses. With Sir Colin Davis as patron, SWING is co-ordinated by David Gladstone, a resident of the borough for over 30 years.

SWING's current major objective is the funding of a foyer in the new Sadler's Wells, to be dedicated to the four villages of Islington - Highbury, Finsbury, Canonbury and Barnsbury. The group now has more than 70 members who, through their subscriptions, have raised over £41,000 towards the foyer.

They have high hopes of raising thousands more on 4th July when the Haydn Chamber Orchestra and guests perform at SWING's first fundraising concert at St James, Clerkenwell. The highlight of the evening will be a performance by the internationally renowned soprano and Highbury resident, Joan Rodgers. The remainder of the programme offers a variety of classical and modern pieces conducted by Mark Shanahan who this autumn conducts *Otello* and *The Barber of Seville* for the English National Opera.

Ticketing information in Events' Guide (*page 14*).

Down at the Sadler's Wells site, progress continues at an excellent pace and the theatre will open as planned in October 1998. On Rosebery Avenue, the facade brickwork is nearing completion and blends successfully with the local streetscape. The fly tower is now clad in a light coloured, reflective material, specially designed to echo the sky above. After dusk it will display the name of Sadler's Wells in fibre optic lettering, creating a welcoming beacon for theatre goers and an inspiring local landmark. The large projection screen over the main entrance will also come to light at night. Constructed from special glass panels which are transformed from transparent to opaque when electrically charged, the double sided screen will show a range of images both outside and inside the theatre. Pictures or words, both moving and still, can be projected onto it, either as a mosaic or in a single immense image.

When the new Sadler's Wells opens in October it will be the most technologically advanced theatre in the country. It will also set new standards in the provision of access for people with disabilities, as a result of the work of Free for All, the innovative consultation group that Sadler's Wells founded at the beginning of the re-

building project. The group has a core membership of 11 people with physical, sensory or cognitive disabilities. Since 1995 they have met monthly with the architects, designers and Sadler's Wells staff to review plans for the new theatre and education centre. Free for All has had ongoing influence over design issues, to the extent that the architects and designers have been contractually obliged to revise plans to meet the group's recommendations.

The following are just some of the results: an air curtain "door" at the main entrance; 30 wheelchair spaces in the auditorium; minicom communication systems for deaf people; specially designed information terminals; textured pathways and braille lettering on handrails, lift buttons etc. for the benefit of visually impaired people. Backstage, a chair lift gives disabled technical staff access to the sound and lighting control rooms. In the dressing rooms, special features include adjustable make up counter units; shower controls that cater for a range of visual, mobility and manual abilities and CCTV screens to inform and cue deaf performers.

Such has been the success of Sadler's Wells pioneering consultation process that it is now recommended as a model of good practice by the National Lottery and Arts Council of England and the London Borough Grants.

Arsenal expansion

Because of space limitations, this is a shortened version of an article by Alison Carmichael of the Highbury Community Association (HCA). The statements and views are hers and do not necessarily represent those of The Islington Society.

The Highbury Community Association is not a single issue group but it is the HCA's attempts to make sense of the implications of Islington Council's planning brief for expansion of Arsenal Stadium to incorporate an extra 12,000 seats and ancillary facilities which earns it coverage in the local and national press. Islington Society Members may be forgiven for finding the whole affair deeply confusing because it is.

The club has announced that it intends to submit, in early November, a planning application to rebuild the west and south stands to provide a total capacity of around 50,000. Company and community representatives agreed that this cannot be achieved without the total removal of 10-12 houses and the demolition and rebuilding, as single aspect dwellings, of about 20 more houses.

About 100 people, tenants and owners, face the knowledge that approval by the Council of an application of this sort means pressure to leave their homes and probably the area, however that might be achieved. The majority do not want to

leave as the road and neighbourhood is where they have chosen to live.

The demolition of homes for a non essential, private business, although deeply abhorrent to many, is only the tip of the iceberg so far as the environmental impact is concerned. Those who have studied the rapidly changing nature of the football business in Europe foresee much more serious dangers for the community at large. Arsenal's owners have revealed no information on how they intend to use the stadium in coming years, either in terms of the frequency or the type of events; but the HCA's predictions for many more matches and events per year have not been denied. Manchester United and Chelsea currently host seven day a week events at their grounds with hotels and conference suites all providing valuable income in addition to ticket sales. Newcastle United has just applied for a seven day a week licence and Chelsea is going to public inquiry in October over its desire for a nightclub licence. Leeds United plan 180 events a year in a new leisure and entertainment complex.

Arsenal currently hosts about 26 first team matches a year, all sold out at 38,500 capacity, and now holds an increasing number of video screenings of away games for crowds of between 10,000 and 20,000 with no policing or traffic controls. Although total capacity has been reduced by

the removal of the terraces, average attendance is higher than ever. Sunday matches, unthinkable only a few years ago, are a regular occurrence. Short notice rescheduling of matches, to accommodate the needs of Sky TV, is disruptive to residents and local businesses alike; and is proving a particular headache for those organising other events in the area. Since eighty percent of the season ticket holders live more than five miles from Highbury, the area is host to an influx of people from afar, more than half of whom get to the ground by car. So far nobody has come up with a believable scheme to ensure that customers come by public transport.

With the smallest ground in the Premier League, at only 10.54 acres, Arsenal is seriously boxed in by Highbury's narrow, residential streets. Stadium designers currently seek to build 50,000 seats on 30 acres. This allows for the ancillary entertainment facilities that form an integral part of the modern football entertainment complex. Does Arsenal PLC not aspire to be up with the leaders in this respect?

Ultimately this debate is not about the numbers of seats to be created or the number of houses to be destroyed but about the sustainability of a traditional, residential urban society with a modern football related leisure complex in its midst.

THE ISLINGTON SOCIETY

**Minutes of the Annual General Meeting held
on Wednesday 22nd April 1998
at Islington Town Hall, Upper Street N1 at 7:30 pm**

Chairman, Harley Sherlock, presided. Apologies for absence were received from Edward Scilloe, F.G. Bird, and Maud Heath. Lord Broadbridge, President of The Islington Society, opened the meeting by welcoming those present. He referred to the need for the Society to achieve a larger membership and encouraged existing members to recruit new members. The Chairman thanked Lord Broadbridge for his role in the Society and his Parliamentary contributions to environmental causes. He said that the Society had been successful in recruiting about a hundred new members since October and currently has a membership of about 600.

1. Minutes

Minutes of the last Annual General Meeting (circulated with the June 1997 newsletter) were approved without corrections and their adoption was proposed by Mary Cosh and seconded by Frank Hopkins.

2. Chairman's Report

The Chairman referred to his report that had been circulated to all members and suggested that it be taken as read. He added that the spring buds now visible on Holloway Road were the result of two years of campaigning to have trees planted. He also recalled that the Society first suggested the new southbound bus priority at the Angel junction in 1975, when it wrote the Council opposing a giant roundabout and underpass at the Angel and favouring instead the present option. Concerned people must keep pushing on these sorts of issues, he reminded the members.

There would be fewer Society meetings on transport and more on wider environmental issues this coming year, the Chairman promised.

3. Adoption of Treasurer's Report and Accounts

Treasurer Adam Bower thanked Miles Thompson, who had preceded him as treasurer for ten years, for handing over a tight, well-run system. Adam reported that the Society's subscription income has increased over 1996. However, the 1997 subscriptions total included £550 which had been received at 31st December in payment of tickets for the Members' Dinner which was held in March 1998 and paid for then. Outgoing for the Society's newsletter is about £500/£600 per issue; miscellaneous expenses include £208 for the Wilmot Bennitt Memorial benches. Overall, the Society broke even for the year, which the Treasurer feels is completely satisfactory.

Miles Thompson proposed and Roger Mears seconded the adoption of the accounts.

4. Appointment of Auditor

The Chairman thanked Raymond Harris for auditing the Society's accounts and agreeing to continue in office. David Gibson proposed and Miles Thompson seconded a resolution to re-appoint Raymond Harris FSCA FAPA as auditor of the Society's accounts for the period to the conclusion of the next Annual General Meeting.

5. Committee Members and Officers

The Chairman reported that Members are being asked to re-elect, to the Executive Committee, Harley Sherlock (Chairman), David Gibson (Vice-Chairman), Sondra Beecroft (Secretary), Adam Bower (Treasurer), David Holland (Recruitment), Jim Lagden (Membership), Kathleen Frenchman, Marion Harvey, Maud Heath, Frank Hopkins and John Milner. He proposed that Gordon Wigglesworth (Chairman of the Planning, Conservation and Transport Committee) be elected to the Executive Committee. Roger Mears proposed and Hazel Hartland seconded these resolutions.

Lord Broadbridge has agreed to continue as President of the Society. Mary Cosh has resigned as vice-Chairman and member of the Executive Committee and has been appointed Vice-President, in recognition of her long, unstinting service to the Society.

The Chairman thanked the members of the Planning, Conservation and Transport Committee for all their work, and listed the members, who are appointed by the Executive Committee: Gordon Wigglesworth (Chairman), Robin King (Vice-Chairman and Secretary), Roger Mears (the Society's representative on the Council's Conservation Advisory Committee), Frances Balfour, Norman Beddington, Mary Cosh, James Dunnett, Maud Heath, Peter Powell and Roy VinjevoId.

Special praises were extended by the Chairman to Kenner Beecroft, Publications' Editor.

Marion Harvey, who for ten years revitalized The Islington Society, was honoured by the Society for her achievements. As an expression of the Society's gratitude, the Mayor of Islington, Councillor Rupert Perry, presented Marion with a copy of the new Pevsner, covering historic buildings in central London. The Chairman praised Marion who succeeded in achieving a high level of respect for the Society from the Islington Council, its officers and politicians. More than half the Executive Committee and many of the Society's corporate members were recruited by Marion who, assisted by Mary Cosh, also edited the newsletter. Marion continues to serve as the founding Chairman of the London Forum.

Marion thanked the Society warmly for its recognition. She urged the Society to involve young people more in schemes such as the Brighter Schools competition; the Chairman agreed that the Society should re-establish the contact with the schools that Marion had originated ten years ago. The chairman commented that Islington Education Department has recently joined the Society as a corporate member.

6. Any Other Business

Cyclists on pavements - Hazel Hartland expressed concern about the dangers of cyclists on pavements. Harley said that Islington Alert was working on this matter and that the Society should become involved in this issue as well. He invited Hazel to attend the next Planning, Conservation and Transport Committee to discuss the matter.

Conclusion - The Chairman thanked Islington Council for letting the Society use its meeting rooms, and adjourned the meeting for refreshments. Tony Allcock, Editor of the Islington Gazette, then reflected on "Tradition ...Here Today and Gone Tomorrow?" The speech was followed by questions and a lively discussion after which the meeting was closed. Those attending were invited for refreshments in the Mayor's Parlour.

Tradition - Here Today and Gone Tomorrow?

Islington is steeped in history but much of what is here today may be gone tomorrow. Tony Allcock, for 23 years Editor of the Islington Gazette, spoke to Members after the Annual General Meeting on Wednesday 22nd April and asked, is this either desirable or unavoidable?

How Islington has changed in the last couple of decades and continues to do so at an accelerating pace! There is a new breed of Islingtonian, well educated, sophisticated and well off but self centred too. We ignore our traditions at our peril but does the New Islingtonian understand this? Continuity is a great force in maintaining stability and change should come about by combining the best of the old with the best of the new.

The Islington Gazette, now in its 142nd year of publication, claims a unique record that gives it a unique authority to speak. Not all Islington institutions have been so fortunate in their survival. Collins Music Hall and Jones Bros, Holloway, have gone and many historic pubs have suffered name changes.

There have been success stories. Canonbury Tower has been kept going by the efforts of the Tavistock Repertory Company, the Coronet Cinema has been carefully restored as a pub and the greatest achievement has been the Business Design Centre. The old Royal Agricultural Hall was

very much a people's venue but had fallen into disuse and would have been bulldozed had it not been for the vision of Sam Morris. The restoration of the Aggie and its evolution into the Business Design Centre is a good example of combining the best of the old with the best of the new.

The redevelopment of Sadler's Wells Theatre has been very much more important than any "not in my backyard" interests. But what about Chapel Market? Is its survival any less important than Sadler's Wells? It is steeped in the tradition of its stalls handed down through the market families. It is a centre of Cockney humour.

Arsenal Football Club, since its arrival in Islington in 1913, has been a way of life for so many in Islington. It has brought glory, pride and pleasure. Now it has outgrown its home. To keep up with the best, Arsenal must expand. Unless it can expand at Highbury it will, sooner or later, have to leave the Borough.

Arsenal belongs to Islington and Islington hearts belong to Arsenal. If it is moved it would be like shifting the Grand National to Kempton Park or the Proms to the Lakeside Shopping Centre! And what would happen to Highbury Stadium if Arsenal moved? Would it be bought by another club? Would Wimbledon be a better occupier?

Should it be pulled down for up market housing? Or left to rot while the argument rages about what should happen to it? It must be allowed to expand but the bottom line is that people who lose their homes must be properly compensated.

The Islington Society, said Tony Allcock, should join the fight to keep Arsenal in Islington. "This is what The Islington Society should be about. Not elitist. Not just for arts and culture but for everything that is best in Islington." According to Allcock, it should use its energies to ensure that all Islington's traditions are preserved. They are unique and worth fighting for.

This was a carefully crafted and thought provoking talk.

Library news

The Leisure Services Committee, which had responsibility for the library service, was disbanded on 31st March and the library service has been transferred to the Information and Customer Services Committee. The Borough Librarian, Liz Roberts, now has the title Assistant Head of Information and Customer Services. The management and administration of the library service has been moved back to Central Library.

As promised many moons ago, the Central Library is now open again on Fridays.

**Welcome to The Angel Improvement Trust and
FOIL (Friends of Islington Libraries)**

The Angel Improvement Trust was set up in 1982 by Islington Council, the Chamber of Commerce and The Islington Society, to press for the revitalisation of the Angel area which was then dominated by dereliction. The Trust was funded by government and council "partnership" money and produced imaginative reports on simple ways of revitalising the run down buildings at Chapel Market and on Upper Street high pavement, as well as separate reports on Chapel Market itself and the New River Head at Sadler's Wells.

The Trust's most notable achievements, however, were the Visitors' Centre on Islington Green which was later absorbed into the Discover Islington Tourist Information Centre and the annual Sam Morris Civic Pride Shopfront Award.

The Angel Improvement Trust has now merged with The Islington Society which will continue the shopfront awards, financed by the Family Trust, and expand them on a borough wide basis. Members are invited on page 4 to make nominations for the 1998 award.

The Society looks forward with pleasure to a much enlarged membership on 1st July when it merges with FOIL (Friends of Islington Libraries).

FOIL was set up in mid 1991, under the chairmanship of Michael Ignatieff,

in the wake of a series of savage cuts to the Borough's libraries' book funds, opening hours and staffing. Its main aim was to urge Islington Council to maintain the public library service at the highest possible level and to widen public awareness of the various aspects of library provision. A secondary role was to provide opportunities for members to meet prominent local authors and discuss their work; and on other occasions to consider library issues and developments.

Two very effective campaigns were mounted in 1991 and 1992 against the proposed closure of West Library. FOIL has nominated a member of the Leisure Services Committee. As one of the major library support groups, FOIL has been much involved in the many recent government reviews.

Authors featured at FOIL meetings include Antony Sher, Nina Bawden, Penelope Lively, Stephen Fry, Nick Hornby, Ben Pimlott and Lesley Grant-Adamson.

At FOIL's AGM on 29th April meeting it was confirmed that FOIL's concerns and activities, assets and membership should all be merged into those of The Islington Society. It was thought that the weight of the older and larger society, in addition to FOIL's, would provide a stronger voice to promote library users' interests.

A birthday party!

London Forum is celebrating ten years' of working with London's Amenity and Civic Societies with a party on Tuesday 9th June. Enjoy a buffet and drinks, the first drink included in the ticket price and the next at a very seductive price, at Covent Garden's London Transport Museum with its feast of delights and memorabilia. Come with your friends and meet guests and celebrities who care about our London and who enjoy a party. The guest of honour will be Paul Finch, editor of the Architects' Journal. Tickets £15 or four for £50. Enquiries to Marion Harvey on 0171-250 0606. For tickets send a cheque payable to London Forum with a stamped, self addressed envelope to Fred Trollope, 9 Suncroft Place, London SE26 4RH

Other Society events

What can be done to make access easy to good quality libraries and adult education? This was a question posed at a joint meeting of the Society and FOIL on Wednesday 28th January. The speakers were Rt Hon Chris Smith, Secretary of State for Culture, Sport and Media, and Liz Roberts, the Borough Librarian.

The Society's first annual Members' Dinner was held at Marsden's Restaurant, Upper Street on Wednesday 18th March. The successful arrangements ensured that Members attending enjoyed a good meal and a happy evening.

Islington's Conservation Advisory Committee

The Council election caused the cancellation of the spring meeting of the Borough's Conservation Advisory Committee but there are a number of topics of interest.

Caledonian Road Forecourts

An Article 4 Direction was confirmed restricting development in the forecourts of the shops on the east side of Caledonian Road, between Richmond Avenue and the North London Line railway bridge, which has been at risk of being enclosed with railings and other permanent structures. This would preserve the unique open aspect of this side of the road and, if current intentions are implemented, enhanced by reinstatement of paving and street furniture. However, an appeal against an enforcement notice has been lodged with the Department of the Environment and a public enquiry will be held in Islington Town Hall on 30th June. Anyone wishing to make their views known should write, quoting reference APP/C/97/V5570/649306, to Room 1111(2), Tollgate House, Houlton Street, Bristol BS2 9DJ.

Islington Street Manual

The Planning Department is preparing a manual which is intended to be used in all the Borough's departments when carrying out work in the street environment. It is in the early stages of preparation and the problems of producing a manual

which is sufficiently comprehensive to be of use, but not too bulky to be difficult to use, have yet to be resolved. Islington's street scene has so much variety of such features as stepped pavements and raised pavements with their railings, granite crossovers and pub delivery ramps, cast iron bollards and York stone paving. The manual is to be welcomed if it helps ensure the maintenance of these historic features.

Cable TV

Cabling has continued apace throughout the Borough. In conservation areas and the vicinity of listed buildings pressure from the Society has, except in one or two areas where cabling was carried out before the alarm bells were rung, achieved careful siting of control cabinets some of which, in the most sensitive areas, will be underground.

Buildings at risk

The October issue of *I.S.NEWS* reported on the Borough's Buildings at Risk Register which identifies buildings where the owners should be pressed to give them the love and care that they need. This process has been a considerable success and a significant number of those properties previously regarded as being at risk are now being worked on or have been taken off the list after completion of the necessary work.

Railings' colours

Scrapings taken off old railings have shown that a whole selection of colours was used before 1940 - not just black. The Society seeks to encourage railing owners to obtain scrapings and to adopt old colour schemes but it is important that railings on any one terrace or group of buildings should all be the same colour.

The conservation team

The Council's conservation team has, for the last two years, been funded in large part by English Heritage but there was considerable doubt about this funding being continued with the distinct possibility that the team which has been working so well might be broken up. It now appears that English Heritage will agree in principle to continue its funding beyond March 1999 though details have yet to be agreed.

Conservation guidelines

As part of the process of updating the Borough's Unitary Development Plan (UDP) the Conservation Section has been revising the guidelines for each of the Borough's conservation areas. These are in draft form and Members of the Society are welcome to inspect them at the Borough's Planning Department and make comments on the detail. These documents have considerable influence on permitted development.

OTHER ISLINGTON SOCIETIES

If you would like a Society in Islington with which you are involved to be considered for listing here, please contact the Publications' Editor (see panel on page 2) with details. He will need to know the name of the Society, a brief summary of its activities, the name, address and telephone number of a contact person and anything else that you think is interesting about it. We are always looking for Societies which fall within the objectives of The Islington Society and may be of interest to its members. Corrections to any of the listings should also be given to the Publications' Editor.

Amwell Society
8 Cumberland Gardens
London WC1X 9AG

Contact: Jane Wainwright
Telephone: 0171-837 8732
Activities: Conservation and amenity society based in the conservation area bounded by Kings Cross Rd, Pentonville Rd and Rosebery Ave.

Angel Association
19 Haverstock Street
London N1 8DL

Contact: Vicky Wisher
Telephone: 0171-253 0243
Activities: Amenities and conservation society for St Peter's Ward; registered charity; affiliated to the Civic Trust.

Canonbury Society
59 Canonbury Road
London N1 2DG

Contact: John Lapthorne
Telephone: 0171-359 5144
Activities: The principal aim of the Society is to conserve the special character of Canonbury.

Clerkenwell Music Series (Friends of)
Magnolia House
131 The High Street
Swanage
Dorset BH19 2NB

Contact: Oswaldo Guerra y Vilar
Telephone: 01929-422100
Activities: Support the activities of the Clerkenwell Music Series.

Haydn Chamber Orchestra (Friends of)
8 Alwyne Square
London N1 2JX

Contact: Pat Woolf

Telephone: 0171-226 1070
Activities: Friends & patrons support Haydn Chamber Orchestra. Attend concerts free.

Highbury Community Association
c/o 83 Highbury Hill
London N5 1SX

Contact: Alison Carmichael
Telephone: 0171-359 5731
Activities: Represents residents & businesses in Highbury, Finsbury Park & Stoke Newington about traffic, conservation, planning & community issues. Newsletter, membership currently free.

Islington Archaeology & History Society, 8 Wynyatt Street
London EC1V 7HU

Contact: Catherine Brighty
Telephone: 0171-833 1541
Activities: Monthly talks September to June; occasional visits and walks; quarterly newsletter; publications on Islington's history, architecture and archaeology.

Islington Boat Club
16-34 Graham Street
London N1 8JX

Contact: The Secretary
Telephone: 0171-253 0778
Activities: A water adventure playground & youth centre for young people aged 9-18. Open evenings & week ends term time, every day in holidays & week end activities on & off site.

Islington Chamber of Commerce & Trade
64 Essex Road
London N1 8LR

Contact: Jennie Twydell
Telephone: 0171-226 1593

Activities: Islington Chamber of Commerce represents, promotes and enhances businesses in the borough.

Islington Chinese Association
33 Giesbach Road
London N19 3DA

Contact: Katy Tse Blair
Telephone: 0171-263 5986
Activities: Provides advice sessions, 5 day luncheon club and meals at home for the older, housebound people, a women's group, youth group, cultural & educational activities.

Islington Gardeners
26 Ripplevale Grove
London N1 2HU

Contact: Julia Dummett
Telephone: 0171-700 2282
Activities: Garden Society for any Islington resident interested in gardening, offering talks, shows, competitions and coach trips and garden centre discounts.

Islington Museum (The Friends of)
268 Upper Street
London N1 2UQ

Contact: Jim Lagden
Telephone: 0171-267 9100
Activities: The Friends support the Museum practically and financially and staff it on a voluntary basis.

Islington Narrow Boat Association
3 Vincent Terrace
London N1 8HJ

Contact: Giles Eyre
Telephone: 0171-490 5125
Activities: Operates 70 ft narrow boat designed for Islington community

continued on next page

OTHER SOCIETIES*continued from page 12*

groups & schools for day trips and week end and six day cruises; available for private hire. (Bookings 0171-267 3722).

London Canal Museum
12-13 New Wharf Road
London N1 9RT

Contact: Martin Sach
Telephone: 0171-713 0836
Activities: Museum of canals and waterways, housed in former Carlo Gatti ice house by Battlebridge Basin. Open Tue-Sun. Exhibition & events' information on <http://www.charitynet.org/lcanalmus>.

Museum of the Order of St John
St John's Gate
St John's Lane
London EC1M 4DA

Contact: Pamela Willis
Telephone: 0171-253 6644
Activities: Islington - From Crusade to First Aid! Museum open 10-5 Mon-Fri, 10-4 Sat. Tours of Tudor St John's Gate, Grand Priory Church & 12th Century Crypt 11 & 2.30 Tue, Fri & Sat.

New River Walk (Friends of the)
3 Hope Close
Wallace Road
London N1 2YS

Contact: John Tasker
Telephone: 0171-354 3363
Activities: Support and the raising of matching funding for the successful Lottery bid to restore the New River Walk and its ponds.

Sadlers Wells Islington Group (SWING)
Sadlers Wells Foundation
23 Islington High Street
London N1 9LG

Contact: David Gladstone
Telephone: 0171-713 0754
Activities: SWING's immediate objective is the funding of a foyer in

the new Sadlers Wells Theatre - target sum £250,000.

Tower Theatre (Friends of the)
Canonbury Tower
Canonbury Place
London N1 2NQ

Contact: Abby-Lee Knight
Telephone: 0171-226 5111
Activities: Promote activities for the support of the Tower Theatre; programme of events for Friends.

Union Chapel Project
The Vestry
Compton Avenue
London N1 2XD

Contact: Julia Farrington
London N1 2XD

Contact: Julia Farrington
Telephone: 0171-226 3750
Activities: Provides an arts programme of music, dance, theatre and performance, hires space for events of all kinds and rehearsal.

ISLINGTON EVENTS' GUIDE

The events' guide gives you information about events taking place in Islington over the next five months. Booking priority may be given to members of the sponsoring organisation which may request a donation from non members or make a charge which is not shown or there may be concessions available. This guide is believed to be accurate but you should check details of events which you would like to attend.

Contact the Publications' Editor (see panel on page 2) if you are involved in events taking place in the Borough during the period from October 1998 to February 1999 and would like them to be considered for inclusion in the next events' guide. He will need to know, by 15th September, brief details of the event, where and when it is taking place, the admission price and the organiser's name and 'phone number.

Telephone for details of exhibitions and events - Islington Museum on 0171-267 9100, London Canal Museum on 0171-713 0836 and Museum of the Order of St John on 0171-253 6644.

June

Sun 7. Magic Meadows - A summer walk looking at flowering meadows in Gillespie Park Local Nature Reserve. 3-4pm. Free. Meet Richard Meyers at the Islington Ecology Centre, Drayton Park, N5. Islington Wildlife Diary.

Tue 9. London Forum's Tenth Anniversary Party. Come with your friends and meet other guests and celebrities who care about London and enjoy a party! Buffet & bar. 6-9pm. London Transport Museum, Covent Garden. Tickets £15 (including 1st drink) or four for £50. Send cheque payable to London Forum & sae to Fred Trollope, 9 Suncrest Place, SE26 4RH. Enquiries to Marion Harvey 0171-250 0606.

Sat 13. Whittington Bike Day. An afternoon of activities celebrating pedal power - including bike maintenance workshops, cycle powered side shows, a cycling proficiency course, unicycle displays and a local bike ride. 2-5pm. Free. Whittington Park, Holloway Road, N19. Islington Wildlife Diary. 0171-354 5162. A Whittington Neighbourhood event.

Sat 13 & June 15 to 19. Tower Theatre - A Passionate Woman by Kay Mellor. 7.30pm (matinee Sun 14 3pm). Box office 0171-226 3633.

Sun 14. From Tracks to Trails. Be the first to walk the new woodland nature trail from the embankments of what was

continued on next page

EVENTS

continued from page 13

once the Finsbury Park to Muswell Hill railway line. This special event marks the launch of a newly completed circular trail built by Nature Wardens and conservation Volunteers. 2-5pm. Free. Meet Richard Meyers at the Car Park, Crouch Hill Recreation Centre, Crouch Hill, N19. Islington Wildlife Diary. 0171-354 5162.

Mon 15-27. West Bay. A photographic exhibition of the work of Martin Parr exploring the seaside theme. The colour saturated images cheekily highlight the mundane and plainly peculiar aspects of this very British resort. Wednesday to Saturday 11am to 5pm, Sunday 2pm to 4pm, Islington Museum, 268 Upper Street, N1. 0171-354 9442.

Tue 16. Walking Islington's Waterways (2): The Hackney Brook. A walk exploring the local and natural history of the Arsenal area of Islington and following the route of one of London's lost rivers, the Hackney Brook. 6.30-8.30pm. Free. Meet Bob Gilbert at Arsenal Tube Station. Islington Wildlife Diary. 0171-354 5162.

Tue 16 to 27. Fourth Islington International Festival. See Highbury & Islington Express for details of events in this mix of contemporary art, live music, international performance, circus and poetry. Festival office 0171-354 2535.

Wed 17. Presentation of this year's Geoffrey Gribble Award for the new or rehabilitated building project judged to contribute most to its local environment. 6pm. The Dairy, Crouch Hill, N4. Islington Society. 0171-226 2207.

Wed 17. History and Habitats of Hampstead Heath. A talk by David Bentley, Hampstead Heath Information Officer following the AGM. 8pm, Islington Town Hall, Upper St, N1. £1

(conc. 50p) from non members. Islington Archaeology & History Society. 0171-833 1541.

Thu 18. New River Walk Mid Summer Garden Party with the Mississippi Ramblers Jazz Trio, dancing, lights, flags, games, raffle, BBQ, food & drinks. Come and celebrate the restoration and re-opening of the gardens and water course. 7-10pm. Canonbury Grove section. Official re-opening at 8.15pm by HRH Princess Alexandra. Adults £5, children £2, family group £10. Numbers limited. Advance purchase recommended from Sarah Ross-Goobey on 0171-226 5370 and Ashley's Newsagents, Canonbury Street, N1.

Fri 19. The New Peterley Players in Once the Cut, a canal musical by Andy Collier. 8pm. £4. London Canal Museum, 12 New Wharf Road, N1. 0171-713 0836.

Sun 21. The Longest Day with the Angel Band. The Angel Band will once again be playing their lively brand of English country music to help celebrate the Summer Solstice at Barnsbury Wood. Come and enjoy the longest day and bring a picnics and join in the dancing! 6.30-9pm. Free. Barnsbury Wood, Crescent Street, N1. Islington Wildlife Diary. 0171-354 5162.

Fri 26. Bill Manley Memorial Pub Crawl - conducted by Andrew Bosi. Join in this Islington tradition. 6.30pm. Meet outside Clock Tavern Clerkenwell Green, EC1. Islington Society. 0171-253 5979.

Fri 26. Absolutely Bats. The first opportunity this year to walk the Parkland Walk by night - looking and listening for bats, owls and foxes. Advance booking essential. 9-10.30pm. Free. Ring the Islington Ecology Centre on 0171-354 5162. Islington Wildlife Diary.

Sat 27. Upper Street closed for the climax of the fourth Islington International Festival. See Highbury

& Islington Express for details of events. Festival office 0171-354 2535.

Sat 27. Batik. Using nature as an inspiration and tutored by Diane Okena, create beautiful materials using wax and dyes with the traditional art of African batik. Advance booking essential. 10am-5pm. £15 including materials. Ring the Islington Ecology Centre on 0171-354 5162. Islington Wildlife Diary.

July

Sat 4. Concert by Haydn Chamber Orchestra, conductor Mark Shanahan, soloist Joan Rodgers in aid of the Sadler's Wells Appeal. St James Church, Clerkenwell Close, EC1. Drinks 6.30pm, concert 7pm. Tickets from Sadler's Wells Development Department, 0171-713 0754.

Sat 4, 7 to 11 & 14-18. Tower Theatre - Return to the Forbidden Planet by Bob Carlton. 7.30pm (matinees Sun 5 & 12, Sat 18 3pm). Box office 0171-226 3633.

Sun 5. A Feast of Flowers - Number 5 of a regular monthly walk highlighting the shifting patterns of nature in the Reserve throughout the year. 3-4pm. Free. Meet Dominic O'Neill at the Islington Ecology Centre, Drayton Park, N5. Islington Wildlife Diary. 0171-354 5162.

Tue 7. The Angel Association Art Award 1998 for children to year 5-6. Prize giving at City University. Schools taking part are Rosemary, Hanover, Charles Lamb and St John Evangelist. Details from Vicky Wisher. 0171-253 0243.

Tue 7. Open Air Theatre - Midsummer Night's Dream by William Shakespeare. A unique play in a unique setting. Enjoy the spirit of summer by watching this performance in the beautiful setting of Islington's only wood. Contact Islington Ecology Centre for

continued on next page

EVENTS

Continued from page 14

details. Islington Wildlife Diary. 0171-354 5162.

Tue 7 - 31 Aug. Pictures entered in the prize giving for the Angel Association Art Award 1998 on display at Finsbury Library, 245 St John Street, EC1.

Wed 8-30 Aug. No Picnic. An exhibition focussing on attitudes towards products and production among contemporary designer makers. It will question the idea that making a 'pleasing' product is the primary motivation in the creative process. Crafts Council, 44a Pentonville Road, N1. 0171-278 7700.

Sat 11. St Paul's Shrubbery Festival. Stalls providing food and entertainment. 12.30-4.30pm. St Paul's, St Paul's Place, N1.

Mon 13. The Islington Society. Meeting of the Executive Committee.

Wed 15. Foxes, Hedgehogs and Badgers. An illustrated talk. Islington Ecology Centre, Drayton Park, N5. 7.30pm. Free. Islington Wildlife Diary. 0171-354 5162.

Sun 19. Clerkenwell Festival. Stalls and entertainment in Exmouth Market, EC1.

Sun 19. The Great Stag Hunt. Beetles, the most successful of all insect groups, come in an amazing variety of shapes, sizes and colours. Search the Parkland Walk for the rare stag beetle and a whole variety of others under the expert guidance of entomologist Dan Hackett. 2.30-4.30pm. Free. Meet at the Car Park, Crouch Hill Recreation Centre, Crouch Hill, N19. Islington Wildlife Diary. 0171-354 5162.

Thu 30. Islington Under Our Feet. By popular demand this walk returns. What were the forces that shaped Islington?

How can these be seen in its streets and buildings today? Professor Eric Robinson of University College, London leads a geological street survey. 6.30-8.30pm. Meet outside Islington Hall, Upper Street. Islington Wildlife Diary. 0171-354 5162.

August

Sun 2. Sunsets, Swifts and Summer Flowers. Gillespie Through the Year number 6. A summer evening stroll looking at life at dusk in Gillespie Park. 6.30-8.30pm. Free. Meet Dominic O'Neill at the Islington Ecology Centre, Drayton Park, N5. Islington Wildlife Diary. 0171-354 5162.

Thu 6. The Mikron Theatre Co in Imagen's War. London Canal Museum, 12 New Wharf Road, N1. 0171-713 0836.

Thu 6. The Mikron Theatre Co in If You Go Down to the Woods. London Canal Museum, 12 New Wharf Road, N1. 0171-713 0836.

Sat 8. Bud, Bark and Leaf. A tree identification walk to make sure you are barking up the right tree. 2-3pm. Free. Meet Ray Busfield at Barnsbury Wood, Crescent Street, N1. Islington Wildlife Diary. 0171-354 5162.

Tue 9. Visit to the Stationers' Company, near St Paul's Cathedral. Numbers strictly limited. Apply before 22 June for ticket with sae in envelope sent to Visit, The Islington Society, c/o Islington Museum Gallery, 268 Upper Street, N1 2UQ. 2pm. The Islington Society. 0171-607 2665.

Wed 19. Walking Islington's Waterways. The Regent's Canal. A guided walk around the urban corner of the canal network, including Camley Street Natural Park and the historic churchyard of Old St Pancras. 6.30-8.30pm. Free. Meet Bob Gilbert by the taxi rank, King's Cross Station. Islington Wildlife Diary. 0171-354 5162.

Fri 28. Absolutely Bats. Another

opportunity to walk the Parkland Walk by night looking and listening for bats, owls and foxes with Richard Meyers. 8.30-10pm. Free. Advance booking essential. Ring the Islington Ecology Centre. Islington Wildlife Diary. 0171-354 5162.

September

Sun 6. Angel Canal Festival. Stalls with arts and crafts for sale, food and drink. Entertainment and boat rides on the Regent's Canal. City Road Basin, Danbury Street, N1.

Sun 6. Michaelmas Meadows. Gillespie Through the Year 7. A guided walk around the Reserve amongst the magnificent display of Michaelmas daisies. 3-4pm. Free. Meet Richard Meyers at the Islington Ecology Centre. Islington Wildlife Diary. 0171-354 5162.

Thu 10-11 Oct. The Jerwood Prize for Applied Arts 1998: Glass. An exhibition of the 37 submissions for this year's Jerwood Prize. They confirm that British Glass is accomplished in all areas from the vessel to the sculptural form. Crafts Council, 44a Pentonville Road, N1. 0171-278 7700.

Sat 12. Concert by Haydn Chamber Orchestra, conductor Philip Ellis, soloist Matthew Barley - cello. Mozart - Overture: The Magic Flute, Dvorak - Cello Concerto and Beethoven - Symphony no 3, the Eroica. 8pm. Christ Church, Highbury Grove, N5. Tickets £6 (concs £3) from Islington Music 0171-354 3195. Contact Alison Glaister on 0171-609 1401 for further information.

Sun 13. 12th Annual Gillespie Park Festival. Fun for all the family with a special emphasis on involving the whole community. Music, dance, clowns, side shows, guided walk and much more. 2-7pm. Free. Islington Ecology Centre. 0171-354 5162.

Wed 16. Something Monastic. A talk by
continued on next page

EVENTS

continued from page 14

Barney Sloane, Chair IAHS. 8pm, Islington Town Hall, Upper St, N1. £1 (conc. 50p) from non members. Islington Archaeology & History Society. 0171-833 1541.

Wed 30. Historic film and slides of Islington. Films and a talk by John Huntley, film archivist and transport expert. 7.30pm. Islington Town Hall, Upper Street, N1. The Islington Society. 0171-253 5979.

October

Sat 3. Harvest in the Wood. A special open day at Barnsbury Wood focussing on the wild foods of woodlands including fungi, berries, leaf teas and birch sap wine! 2.30-3.30pm. Free. Meet Dominic O'Neill at Barnsbury Wood, Crescent Street, N1. Islington Wildlife Diary. 0171-354 5162.

Sat 3 & 6 to 10. Tower Theatre - The Importance of Being Earnest by Oscar Wilde. 7.30pm (matinee Sun 4 3pm). Box office 0171-226 3633.

Sun 4. Mists and Mellow Fruitfulness. Gillespie Through the Year 8. An early autumn guided walk around the Reserve. 3-4pm. Meet Richard Meyers at the Islington Ecology Centre, Drayton Park, N5. Islington Wildlife Diary. 0171-354 5162.

Sun 11. Charlock to Corncockle. Modern agricultural practices have made our once common cornfield wild flowers almost a thing of the past. In this practical conservation project, a cornfield weed patch will be sown to ensure a colourful display next summer. 2-4pm. Free. Meet Ray Busfield at the Islington Ecology Centre, Drayton Park, N5. Islington Wildlife Diary. 0171-354 5162.

Mon 12. The Islington Society. Meeting of the Executive Committee.

Wed 14. Wildlife Rescue. An

illustrated talk on the work of the Enfield Wildlife Rescue. 7-8.30pm. Free. Islington Ecology Centre, Drayton Park, N5. Islington Wildlife Diary. 0171-354 5162.

Sat 17 & 20 to 24. Tower Theatre - Good Fun by Victoria Wood. 7.30pm (matinee Sun 18 3pm). Box office 0171-226 3633.

Sun 18. Fungal Foray. A mushroom hunt around the Gillespie Park Nature reserve led by Clifford Davey, one of London's leading mushroom experts. 2-4pm. Free. Islington Ecology Centre, Drayton Park, N5. Islington Wildlife Diary. 0171-354 5162.

Wed 21. Subject and speaker to be announced. 8pm, Islington Town Hall, Upper St, N1. £1 (conc. 50p) from non members. Islington Archaeology & History Society. 0171-833 1541.

Sun 24. Sponsored walk and run along the Parkland Walk to raise money for Oxfam's Sudan Fund. Details from Islington Ecology Centre, Drayton Park, N5. Islington Wildlife Diary. 0171-354 5162.

Wed 28. 1998 James Ogilvy-Webb Memorial Lecture by Richard MacCormack, Past President of the Royal Institute of British Architects and President of The London Forum of Amenity and Civic Societies, who will talk about modern buildings in historic settings. 7.30pm. Islington Town Hall, Upper Street, N1. 0171-226 7429. Council Chamber.

Sat 31 & 3 to 7 Nov. Tower Theatre - Chapter Two by Neil Simon. 7.30pm (matinee Sun 1 Nov 3pm). Box office 0171-226 3633.

Regular events

Conservation volunteer days - help in a range of nature conservation tasks including planting, clearing, coppicing, construction of steps, stiles, paths and much more. Meet at *Barnsbury Wood*, Crescent Street N1 on

Tuesdays from 1-4pm or the Car Park, Crouch Hill Recreation Centre, Crouch Hill, N19 for *Parkland Walk* on Tuesdays from 2-4pm. 0171-354 5162.

Guided walks of Islington take place throughout the year. They normally last for about two hours and cost £4 with concessional rates available and you can either join one or arrange a group booking. For details contact Angel Walks on 0171-226 8333.

Yoga lessons by Sarah Mackintosh in the perfect setting for yoga. Improve your flexibility, strength, relaxation and breathing. Bring a mat or blanket and wear comfortable clothes with an extra layer for relaxation. For details of bookings, fees and concessions ring the Islington Ecology Centre on 0171-354 5162.

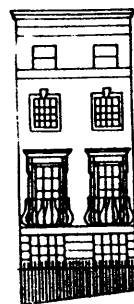
**OTHER ISLINGTON
SOCIETY EVENTS FOR YOU
TO NOTE**November

Wed 18. Meeting on Nineteenth Century Social Housing. 8pm. The Islington Society jointly with Islington Archaeology & History Society. Islington Town Hall, Upper Street, N1.

1999

January

Wed 27. Projected meeting on The Greenwich Collection of architectural artifacts through the centuries. The Islington Society jointly with the Friends of Islington Museum.



16 Percy Circus
VLADIMIR ILYICH LENIN
the founder of
Russian communism
stayed here



1 Highbury Place
WALTER SICKERT
the artist
lived here